



Aurora 9

9 Channel 2.4GHz Aircraft Computer Radio

Hitec is proud to introduce our new flagship radio the Aurora 9. The Aurora 9 is a "pure digital" 2.4GHz system offering real-time response yet it is also compatible with the Spectra PRO for PPM and PCM Operation. The Aurora is a true 3 in 1 radio with sophisticated programming for sailplanes, helicopters and all kinds of power planes. The Aurora 9 also features a backlit 5.1 inch touch screen display, 30 model memory, assignable switches and customizable programming menus. With all these features and a price that can't be beat, there is no doubt the Aurora 9 will become the radio of choice for the most sophisticated pilots.



AURORA 9

DIGITAL PROPORTIONAL RADIO CONTROL SYSTEM

- 24R** Extendable to Max. 24-Rates by 8-Flight Conditions & 3-Switch Positions
- 8R** Extendable to Max. 8-Rates by 8-Flight Conditions
- 3R** Extendable to Max. 3-Rates by 3-Switch Positions

[Standard Programming]

- 9 Assignable Control Channels
- 3 Model Types (ACRO/GLID/HELI) Programming
- 30 Model Memories
- 20 Character model name
- 8 Flight Conditions with 10 Characters
- Fail-safe
- Channel Function
- EPA
- Dual Rate & EXP **24R**
- Sub-Trim
- Servo Reverse
- Servo Speed (Up to 25 sec in Each Direction) **24R**
- Servo Monitor (Monitor & Servo Test)
- 8 Programmable Mixes (5 x 2-Point , 3 x 7-Point Curves) **8R**
- Trainer

[Advanced ACRO Programming]

- 9 Wing Type (6 Main Wings, 3 Flying Wings)
- 5 Tail Type (Main Wing: Normal, V-Tail, Ailelevator) (Flying Wing: 1 Servo Rudder, 2 Servo Rudders)
- Quick Model Options Select (Dual Engine, Retracts gear, Airbrake, Fuel mixture)
- 7 Point Throttle Curve **24R**
- Throttle Cut
- Idle Down
- Fuel Mixture **24R**
- Airbrake
- Airbrake to Elevator Mix **8R**
- Aileron to Rudder Mix **8R**
- Elevator to Camber Mix **8R**
- Rudder to Aileron Mix **8R**
- Aileron Differential **24R**
- Aileron to Flap Mix **8R**
- Camber Mix **8R**
- Flap Control **24R**
- 3 x Gyro Sensitivity (ex: AILE/ELEV/RUDD) **24R**
- Snap-Roll (4-Way Switching Multi Direction) **8R**
- V-Tail **8R**
- Delta Mix **8R**
- Ailelevator **8R**

[Advanced GLIDER Programming]

- 9 wing Type (6 Main Wings, 3 Flying Wings)
- Five Tail Type (Main Wing: Normal, V-Tail, Ailelevator) (Flying Wing: 1 Servo Rudder, 2 Servo Rudders)
- Quick Model Options Select (Motor, Retracts Gear, Airbrake)
- Motor Control (Switch on/off) **8R**
- Airbrake
- Airbrake to Elevator Mix **8R**
- Aileron to Rudder Mix **8R**
- Elevator to Camber Mix **8R**
- Rudder to Aileron Mix **8R**
- Aileron Differential **24R**
- Aileron to Flap Mix **8R**
- Launch (Stick Position Auto Cut Function) **8R**
- Camber Mix **8R**
- Flap Control **24R**
- 3 x Gyro Sensitivity (ex: AILE/ELEV/RUDD) **24R**
- Butterfly **8R**
- V-Tail **8R**
- Delta Mix
- Ailelevator **8R**

[Advanced HELI Programming]

- 6 Swash Type
- 90° Type: 1 Servo, 3 Servos, 4 Servos
- 120° Type: 3 Servos
- 140° Type: 3 Servos
- 180° Type: 2 Servos
- Quick Model Options Select (Governor, Needle Control, Fuel Mixture)
- 7 Point Pitch Curve **24R**
- 7 Point Throttle Curve **24R**
- Throttle Cut
- Gyro Sensitivity **24R**
- Needle Control **24R**
- Swash to Throttle Mix **24R**
- Rudder to Throttle Mix **24R**
- Fuel Mixture **24R**
- Throttle Hold **8R**
- Swash Mix (Swash Rate/Calibration) **8R**
- Revolution Mix **24R**
- Governor (Three Rates) **24R**

2.4GHz Telemetric AFHSS

ADAPTIVE FREQUENCY HOPPING SPREAD SPECTRUM

[Basic Features]

- AFHSS 2.4GHz / PPM / PCM Compatible (2.4GHz Version to be released first)
- Easy to Read, Easy Accessible 5.1 Inch Wide Touch LCD with Backlight (320 x 80 Pixel)
- Customizable Menu
- One-Stop Model Type Setting
- 3 Multi-Tasking Digital Trims
- Fully Assignable Control Switch, Knob, Stick and Digital Trims
- Highly Sensitive 8 Ball-Bearing Gimbals
- Full-Sized Comfortable Hand Grip (Top Quality Elastomer)
- Selectable 4 Different Control Stick Mode (Plus, 2 Additional Manual Modes (Software))
- Super-Easy Gimbal Mode Change(Hardware) / Tension Adjustment
- Power Management System (Adjustable Backlight & Auto Shut-off Time)
- Digital Trim Nano-Adjuster (200 Adjustable Trim Steps) (Approx. 0.025deg ~ 5deg / Step)

Stock# 191240

2.4GHz Standard Version (w/ 9ch Receiver)
Transmitter, Four HS-5485HB Digital Servos and Optima 9 9channel 2.4GHz Receiver, With Rechargeable Transmitter & Receiver Batteries and AC Charger

Stock# 191241

2.4GHz Premium Version (w/ 9ch Receiver)
Transmitter, Four HS-7965MG Digital Servos and Optima 9 9channel 2.4GHz Receiver, With Rechargeable Transmitter & Receiver Batteries and AC Charger

Stock# 191242

2.4GHz Transmitter & 9ch Receiver Only Version
Transmitter and Optima 9 9channel 2.4GHz Receiver, With Rechargeable Transmitter & Receiver Batteries and AC Charger

Stock# 191243

2.4GHz Standard Version (w/ 7ch Receiver)
Transmitter, Four HS-5485HB Digital Servos and Optima 7 7channel 2.4GHz Receiver, With Rechargeable Transmitter & Receiver Batteries and AC Charger

Stock# 191244

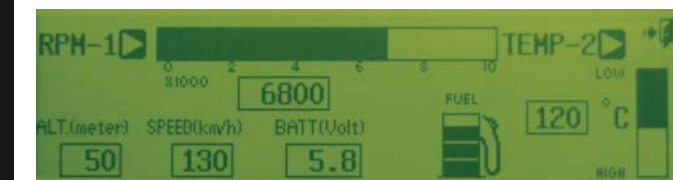
2.4GHz Transmitter & 7ch Receiver Only Version
Transmitter and Optima 7 7channel 2.4GHz Receiver, With Rechargeable Transmitter & Receiver Batteries and AC Charger

Get Hitec AFHSS 2.4GHz Module System and Upgrade Your Radio Gears!

- Stock# 28414 Optima 7 Full Range 7ch. 2.4GHz Telemetric AFHSS Receiver
- Stock# 28425 Optima 9 Full Range 9ch. 2.4GHz Telemetric AFHSS Receiver
- Stock# 28315 HMA-24FI 2.4GHz Telemetric AFHSS Module
- Stock# 29412 7ch 2.4GHz Combo A (Optima 7 2.4GHz Receiver + HMA-24FI 2.4GHz Module)
- Stock# 29424 7ch 2.4GHz Combo B (2 X Optima 7 2.4GHz Receivers+ HMA-24FI 2.4GHz Module)
- Stock# 29415 9ch 2.4GHz Combo A (Optima 9 2.4GHz Receiver + HMA-24FI 2.4GHz Module)
- Stock# 29430 9ch 2.4GHz Combo B (2 X Optima 9 2.4GHz Receivers + HMA-24FI 2.4GHz Module)



Easy to Read, Easy Accessible 5.1 Inch Backlight Touch LCD



Display for Telemetric Monitoring System

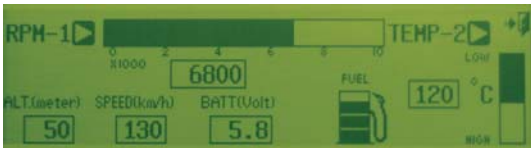


AFHSS

2.4GHz Telemetric ADAPTIVE FREQUENCY HOPPING SPREAD SPECTRUM

Features

- Hitec's Unique AFHSS (Adaptive Frequency Hopping Spread Spectrum) 2.4GHz Modulation
- Easy and Fast Link
- Boosted Omni-Directional Antenna(BODA) System Applied
 - Full Range 6ch / 7ch Receiver : Single BODA System
 - Full Range 9ch Receiver : Dual BODA System for Added Security
- SmartScan Mode Selectable
- SPC(Supplement Power Connection) System Selectable for Electric Plane
 - Motor Battery Utilization for Supplementary Power Supply to Receiver
 - Wide Input Voltage Range (3.7~35V)
 - Voltage Check Function of Motor Battery (with Optional System)
- Basic Telemetry Function : RX Low Battery Warning and Range-Out Warning
- Optional Telemetry Function :
 - Motor RPM, Motor Temperature, GPS, Fuel Gauge and Voltage Check (with Optional Sensors and Sensor Station)
- Range Check Mode (Reduce a transmitter's output to approx. 30M range)
- Fail-safe/Hold Function
- Software & Firmware upgradable



Display for Telemetric Monitoring System (Aurora 9)



Boosted Omni-Directional Antenna(BODA)



Telemetry Data Port & SPC Port



PC Software for Telemetric Monitoring System

Get a Combo Pack at More Attractive Price!

- Stock# 29412 7ch 2.4GHz Combo A (Optima 7 2.4GHz Receiver + HMA-24FI 2.4GHz Module)
- Stock# 29415 9ch 2.4GHz Combo A (Optima 9 2.4GHz Receiver + HMA-24FI 2.4GHz Module)
- Stock# 29424 7ch 2.4GHz Combo B (2 X Optima 7 2.4GHz Receivers+ HMA-24FI 2.4GHz Module)
- Stock# 29430 9ch 2.4GHz Combo B (2 X Optima 9 2.4GHz Receivers + HMA-24FI 2.4GHz Module)



HMA-24FI

- AFHSS 2.4GHz Telemetric Module
- All Hitec Module Type Transmitters and Futaba 9C / 9Z Series Compatible
- Versatile Telemetric Data Port (w/ Optional Sensors)
- Easy Link
- Size :

Stock# : 28315



OPTIMA 6

- Full Range AFHSS 2.4GHz 6ch Receiver
- Boosted Omni-Directional Antenna Applied
- Supplementary Power Connection (SPC)
- SmartScan Mode Selectable
- Size : 46.15 X 21.42 X 11.1mm

Stock# : 28410



OPTIMA 7

- Full Range AFHSS 2.4GHz 7ch Receiver
- Boosted Omni-Directional Antenna Applied
- Supplementary Power Connection (SPC)
- SmartScan Mode Selectable
- Size : 57 x 21 x 11.4mm

Stock# : 28414



OPTIMA 9

- Full Range AFHSS 2.4GHz 9ch Receiver
- Dual Boosted Omni-Directional Antenna Diversity
- Supplementary Power Connection (SPC)
- SmartScan Mode Selectable
- Size : 47.95 X 28.5 X 15.35mm

Stock# : 28425

